



## Barracuda Web Security Flex

Protection for Web users inside and beyond the corporate perimeter with unified policy management and reporting

Web security is today's must-address issue. It is difficult to safeguard all Web users from phishing, malicious Javascript, worms, and other attacks since users access the Web not only through desktop computers, but also through equally vulnerable notebook computers — from inside and beyond the corporate perimeter. No single product has been able to protect all classes of Web users until now. Barracuda Web Security Flex delivers leading Web security to all users with the flexible architecture, unified management and commercial terms that let administrators focus on providing comprehensive Web security rather than dwelling on technology or costs.

### Layered Real-Time Threat Protection

- Anti-virus signatures update continuously for fast response to new and known threats
- Advanced heuristics block unknown Web viruses and spyware
- AJAX-aware analysis detects malicious Web apps and script-based attacks
- HTTP behavior analysis and intrusion detection block botnet communication, spyware and rogue anti-virus
- Advanced Anti-Spam Intelligence protects against blended email and Web threats
- Web filtering and application control for Web apps like IM, VoIP, P2P file sharing and streaming media
- Advanced policy management for Web filtering like file and content type control, data leak prevention and restrictions on bandwidth and time.

### Customize Security Coverage to Any Environment

Barracuda Web Security Flex delivers state-of-the-art Web security through three deployment options that you administer through one management portal. For corporate and branch office deployments, gateway Web security appliances (hardware or virtual) integrate with enterprise directory services, like Active Directory, behind the firewall to enable user and group-based policy control. A pure SaaS Web security service provides Web security for remote office and home-based users. Software agents extend security to mobile users' laptops. Administrators can select any deployment option or any combination of deployment options to satisfy their exact Web security needs.

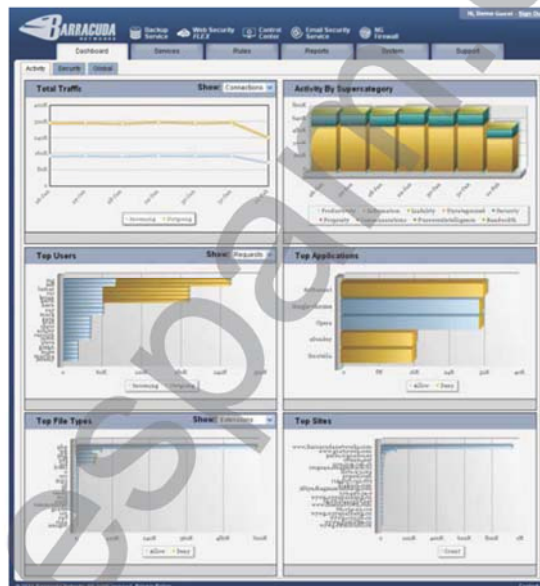
### Unified Management and Reporting

The cloud-based management portal lets multiple administrators configure Web usage rules, monitor Internet access and generate detailed reports across all three deployment options. The dashboard gives administrators a quick snapshot of aggregated traffic. Administrators can also drill down through levels of increasingly granular data.

### Driving Out Deployment Risk

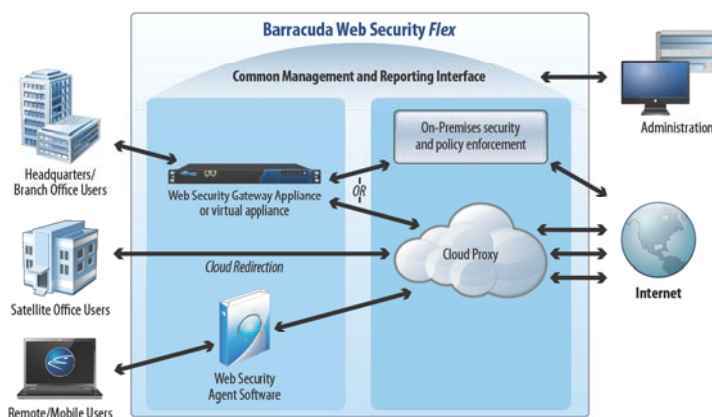
With Barracuda Web Security Flex, the economics center around the size of the user population protected, rather than the specifics of the deployment. Even when additional gateway hardware is required for deployment, costs involve a simple one-time setup fee. There are no additional recurring charges associated with the maintenance of that hardware. There are no additional software license fees for agents.

When needs change, you can easily add or remove deployed components. Barracuda Web Security Flex pricing effectively ends acquisition risks.



The cloud-based management portal provides a snapshot of Web activity across all the users in the organization independent of location.

### Barracuda Web Security Flex Architecture



BARRACUDA WEB SECURITY FLEX

## Technical Specifications

### Key Features

#### VIRUS AND MALWARE PROTECTION

- Signature-based anti-virus detection
- Heuristic malware analysis
- Real-time script interpreting and AJAX analysis
- Monitors HTTP traffic for bot signatures
- Threat intelligence detection of botnets, exploit kits and rogue anti-virus

#### APPLICATION CONTROL

- Control and reporting of over 50 Web-based applications
- Communications and instant messaging clients
- Peer-to-peer/file-sharing software
- Streaming media
- Control of various browsers

#### DEPLOYMENT OPTIONS

- Cloud filtering via direct proxy or transparent forwarding
- Barracuda Web Security Gateway for on-premises integration and policy enforcement. Available as:
  - Hardware appliance (6 models)
  - Virtual appliance
- Barracuda Web Security Agent – enforced policy control and protection for laptop and desktop computers
- Barracuda Web Security Service for BlackBerry – integration with BlackBerry Enterprise Server
- Barracuda Web Security Service for ISA Server – plug-in for seamless integration with Microsoft ISA Server

#### ENTERPRISE INTEGRATION

- Integrated authentication and group lookup
- Transparent user identification
- Role-based administration
- Directory service integration with Active Directory and LDAP
- Automated or manual directory upload
- Multiple proxy configurations – direct/explicit or transparent
- WCCP and policy-based routing

#### BARRACUDA WEB SECURITY AGENT

- Enforces policy and security protection through the service
- Tamper-resistant to prevent user bypass or reconfiguration
- Silent install for enterprise deployment
- Supports user- and group-based policies

#### URL AND CONTENT FILTERING

- Real-time page content analysis and reputation scoring
- 67 categories organized in seven supercategories
- Whitelist and blacklist by domain
- File type/extension and Web content type filtering

#### WEB ACCELERATION

- Collaborative caching for accelerated content delivery
- Local object caching for local bandwidth savings







#### POLICY MANAGEMENT

- Rules apply globally or to users, groups or IP addresses
- Complex rules combining multiple restriction and exception types
- User-controlled rule execution order
- Customizable block pages and alerts
- Blocking override by password
- Coaching, or soft-blocking, to warn users
- Establish usage thresholds by schedule, bandwidth, requests or browsing time

#### REPORTING

- Comprehensive Web-based reporting across entire organization
- Graphical dashboard summary
- Customizable summary and detailed reports
- Immediate interactive reports or scheduled delivery
- User-based browsing time reports
- Real-time, interactive forensics log reporting
- Exportable to PDF, XML or CSV
- Drill-down reporting to navigate to more detail

### BARRACUDA WEB SECURITY GATEWAY SERIES

Model 215		Model 615	
	Suggested Throughput: 5 Mbps Suggested Number of Users: Up to 150		Suggested Throughput: 50 Mbps Suggested Number of Users: Up to 2,500 Ethernet Bypass Hardware: Yes WCCP: Yes
Model 315		Model 815	
	Suggested Throughput: 10 Mbps Suggested Number of Users: Up to 300 Ethernet Bypass Hardware: Yes		Suggested Throughput: 200 Mbps Suggested Number of Users: Up to 5,000 Ethernet Bypass Hardware: Yes WCCP: Yes
Model 415		Model 915	
	Suggested Throughput: 20 Mbps Suggested Number of Users: Up to 700 Ethernet Bypass Hardware: Yes WCCP: Yes		Suggested Throughput: 300 Mbps Suggested Number of Users: Up to 8,000 Ethernet Bypass Hardware: Yes WCCP: Yes

Also Available for VMware

US 1.0

Specifications subject to change without notice.